

## Assembly instruction 08/2018

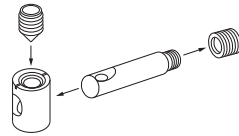
### TOOLS:

Allen screw SW 5 (enclosed)

XS bolts

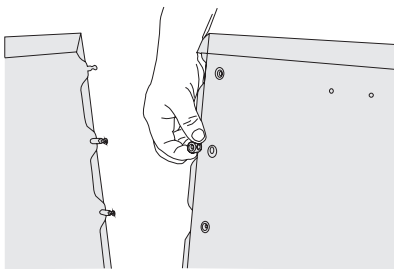
boxes

grub screws

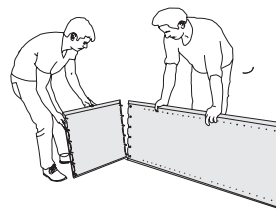


Setup Video:  
<https://www.youtube.com/watch?v=ioIUTDqtvGE>

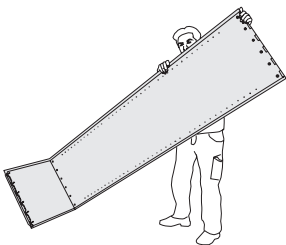
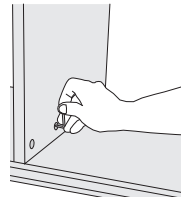
Please do the setup of the bed on a **soft surface (e.g. a carpet or blanket)** to avoid damages.



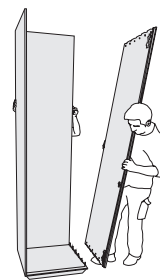
**1.** Screw in the XS bolts in the provided holes in the bottom. Place the boxes in the side of the closet and make sure, the orientation of the box is in the direction of the XS bolts.



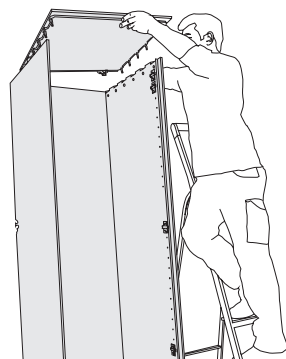
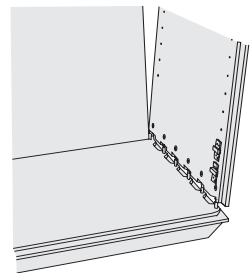
**2.** Place the side of the closet onto the XS bolts and fasten the screws with the grub screws.



**3.** Place the bottom and Side part upright und put in the back panel in the notch.



**2.** Place the other side of the closet with the boxes inside on the XS bolts and fasten them with the grub screws.



**5.** Screw in the XS bolts in the top of the closet, put in the boxes in the side and place the top, starting on one side, on the closet.  
After fasten the grub screws.