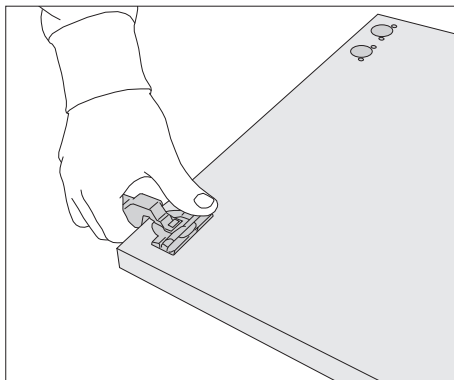


Assembly of the doors

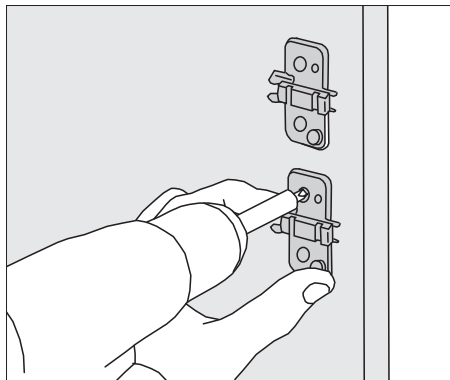
Tools:

Cross screw driver (size 2)

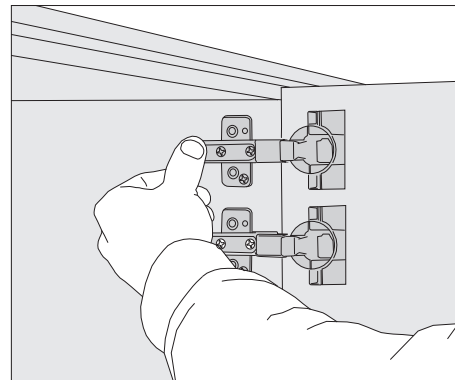
Please install all shelves and drawers before the doors are assembled!



1. Press the hinge cups into the holes provided in the doors and turn over the brackets.



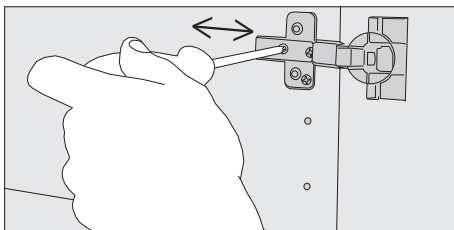
2. Attach the mounting plates (remove them from the hinges), the arrow must be facing forwards.



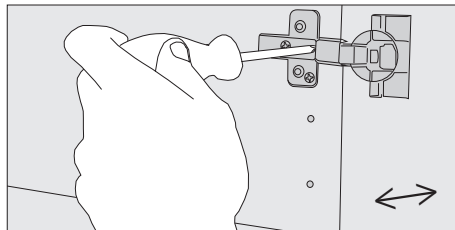
3. Hold the door in the open position and hook the hinges onto their mounting plates. Press on the bars to snap them in place against the plates. Now close the door and check the reveal.

Adjust side to side

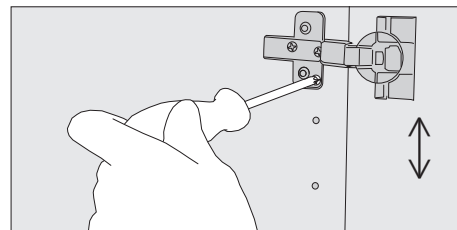
4. The doors have to align with the cabinet frame:



backwards and forwards



horizontal distance



vertical distance

KIN wall mounting

Tools:

enclosed: spacer, shim, screw 5 x 70mm + dowel 8mm (for bricking)

required: drilling machine and drill (for wood and bricking)

Use suitable dowels (depending on wall type) to mount the furniture with the screws.

The spacers need to be between the rear panel and the wall. The position of the screw is flexible, the distance between screw and top edge should not be more than 5 cm.

First drill a hole in the rear panel. Mark this position on the wall and then drill the hole for the dowel.

