






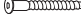

ECLAIR PETIT Bold

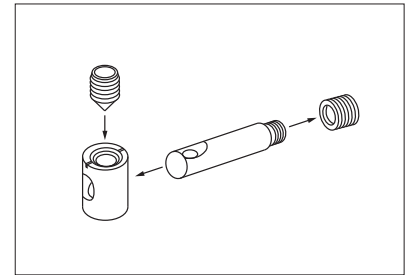
ZEITRAUM

Assembly instructions 07/2022

TOOLS:

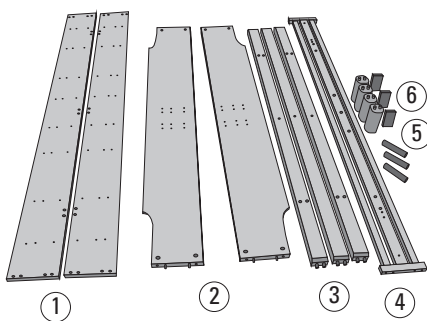
allen key SW4 and SW5 (enclosed), crosstip screwdriver

10 x XS steel dowels		3 x threaded rods (M8x70)	
10 x connector housings		3 x threaded rods (M8x215)	
10 x grub screws		3 x distance blocks (100x60x40)	
24 x Confirmat screws		3 x center support feet, adjustable	
3 x sleeve nuts (M8)			

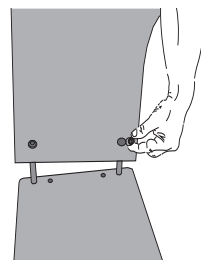


Watch this video for further information on the metal fitting:
<https://www.youtube.com/watch?v=ioIU7DqtvvE>

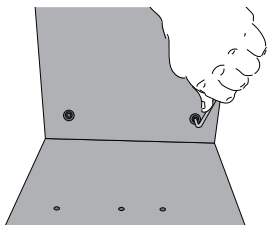
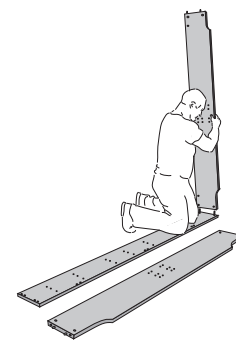
Please assemble the bed **on a soft surface (e.g. a carpet or blanket)** to avoid damages.



- 1 side rails
- 2 foot and headboard
- 3 crossbars
- 4 center rail and support bars
- 5 bed and center support feet
- 6 distance blocks



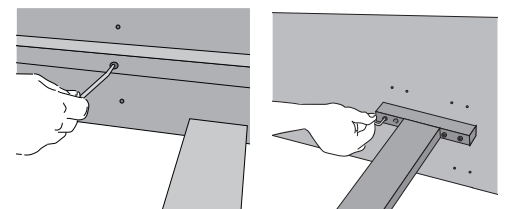
- 1. Screw XS dowels into side rails (1) and insert the connector housings into the holes. Align dowels and housings correctly! Mount foot and headboard (2) to the side rails.



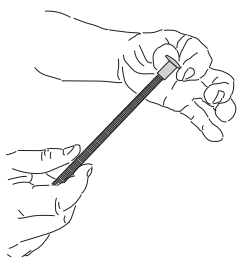
- 2. Fix the connection with grub screws.



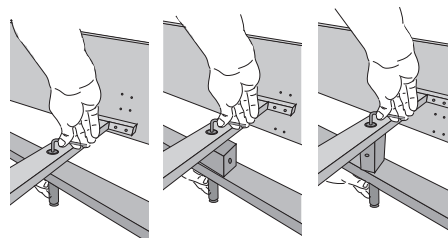
- 3. Place the bed feet (5) on the crossbars (3) and attach them to the side rails. Fix the center crossbar with XS connectors. Then attach the second side rail.



- 4. Mount the center rail and the support bars (4) using Confirmat screws.



- 5. Screw the sleeve nuts onto the threaded rods (short threaded rods only for lowest position).



without distance block: insertion depth 16,5 cm
 horizontal distance block: insertion depth 10,5 cm
 vertical distance block: insertion depth 6,5 cm

- 6. Choose the position of the distance blocks (6) according to the insertion depth. Position the center support feet under the crossbars and screw in the threaded rods while holding the center support feet. Adjust the height of the center support feet.