

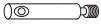




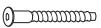

SIMPLE SOFT Bold

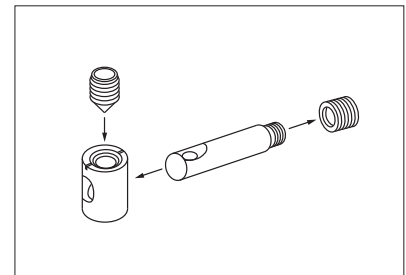
ZEITRAUM

Assembly instructions 07/2022

TOOLS:

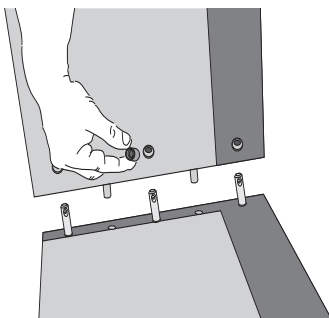
Allen key SW4 and SW5 (enclosed), crosstip screwdriver

14x XS steel dowels		3x threaded rods (M8x70)	
14x connector housings		3x threaded rods (M8x215)	
14x grub screws		3x center support feet, adjustable	
24x Confirmat screws		3x distance blocks (100x60x40)	
3x sleeve nuts (M8)		3x distance blocks (40x60x40)	

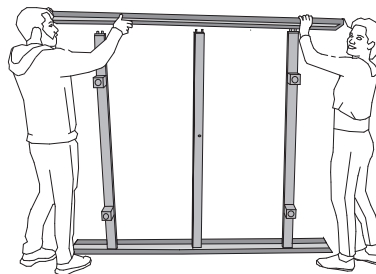


Watch this video for further information on the metal fitting:
<https://www.youtube.com/watch?v=ioLUTDqtvgE>

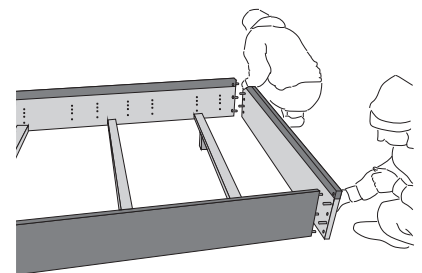
Please assemble the bed **on a soft surface (e.g. a carpet or blanket)** to avoid damages.



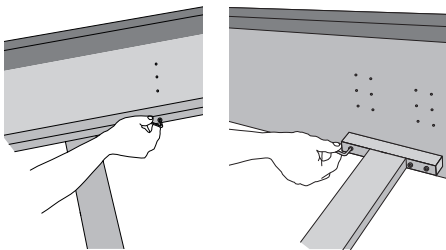
1. Insert connector housings and screw steel dowels into side rails, crossbars, head and footboards. Align dowels and housings correctly!



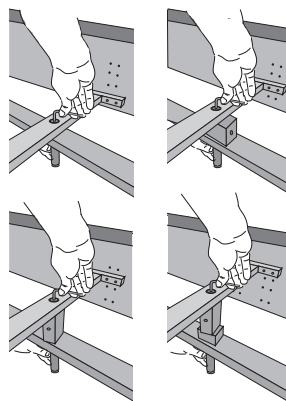
2. Mount the bed feet to the crossbar. Attach the crossbars to one of the side rails. Fix the connection with grub screws. Mount the second side rail the same way.



3. Mount headboard and footboard.

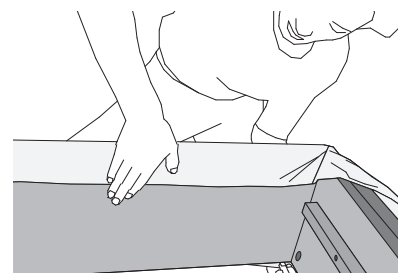
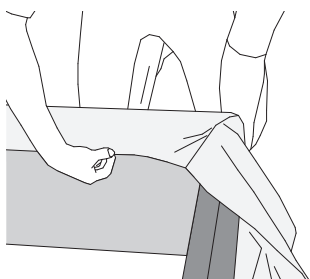


4. Fix the support bars and center rail with Confirmat screws. Choose the right distance block and secure the block with Spax screws in the right length (5x100, 6x140, 6x180).



5. Screw the sleeve nuts onto the threaded rods (short threaded rods only for lowest position). Choose the right distance blocks according to the insertion depth. Position the center support feet under the crossbars and screw in the threaded rods while holding the center support feet. Adjust the height of the center support feet.

without distance block: insertion depth 24,5 cm
 horizontal big distance block: insertion depth 18,5 cm
 vertical big distance block: insertion depth 14,5 cm
 both distance blocks: insertion depth 10,5 cm



6. Place the cover at one corner and fix it with the hook-and-loop fastener. Afterwards place the cover around the whole bed frame und fix it with the hook-and-loop-fastener from the corners to the middle of the bed starting at the lower edge of the bed frame und pulling it upwards.