

Assembly instructions 05/2023

TOOLS

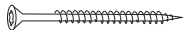
required: drill machine, level

enclosed: allen key

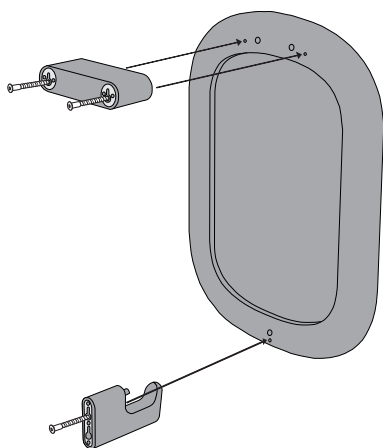
4x wall plugs (Ø 8mm)



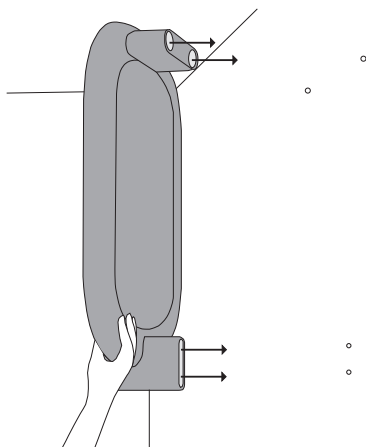
4x Spax screws (4,5x50mm)



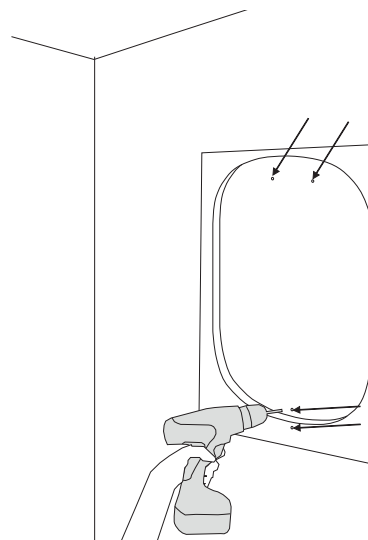
3x confirmat screws (5x50mm)



1. Mount the mounting block and the hook with the confirmat screws.

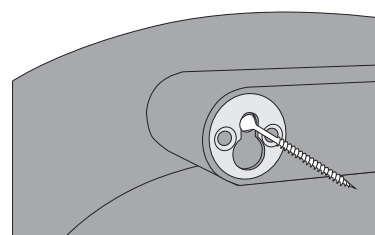
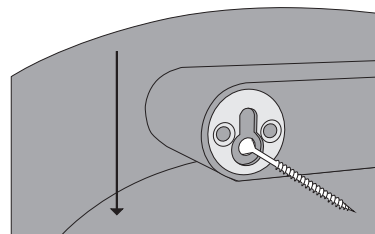


3. Place the wall mirror with the keyhole fittings on the screw heads. If necessary, adjust the screws.



2. Use the fibreboard as a drilling template. Position the template using a level and mark the 4 positions. Drill the holes.

Use suitable wall plugs (depending on wall type) to mount the mirror. Tighten the screws until 7 mm of the screws are still visible.



Functionality of the keyhole fittings

4. Push below until it stops.