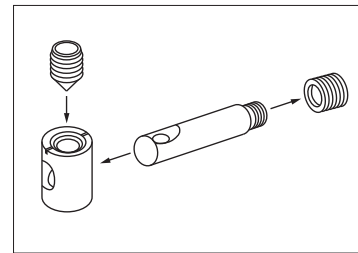
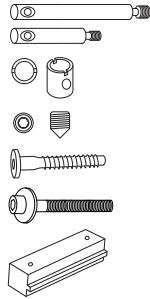


Assembly instructions 08/2023

TOOLS:

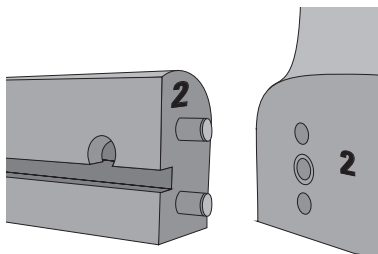
Allen key SW4 and SW5 (enclosed)

- 8x XS steel dowels long
- 12x XS steel dowels short
- 8x connector housings
- 20x grub screws
- 32x flat head screws
- 6x allenscrew M6 incl. washer
- 16x blocks

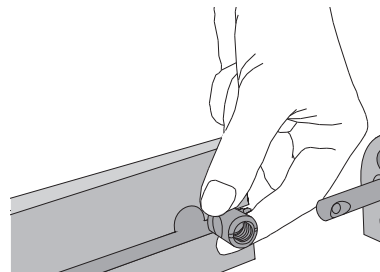


Video:
<http://www.scheulenburg-direkt.de/index.php?page=content&colID=11>

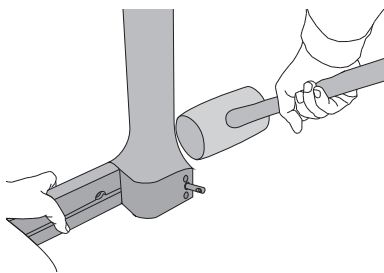
Please assemble the table **on a soft surface (e.g. a carpet or blanket)** to avoid damages.



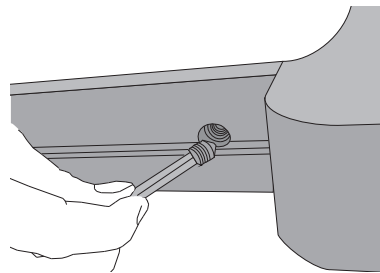
1. Assemble frame rails and legs **according to the numbers.**



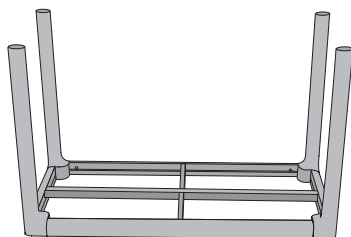
2. Screw the long XS steel dowels into the legs (do not overtighten!) and insert the connector housings into the frame rails. Screw the short XS steel dowels into the center of the frames rails and reinforcing cross and fit the housings to the reinforcing cross. When aligning the housings, ensure that the slots point towards the intersecting holes.



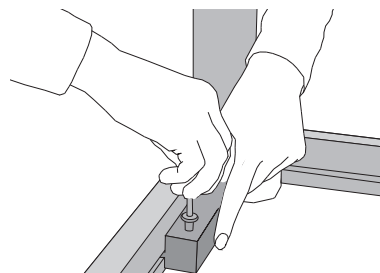
3. Gently knock the legs onto the short frame rails.



4. Secure the connectors using grub screws. If you cannot tighten the connection, loosen the grub screw and unscrew the steel dowel by one or two turns. Then connect again.



5. Next, assemble the reinforcing cross. Mount the long frame rails on the reinforcing cross and fix them in place, then place the short frame rails with the legs on the sides and mount them.



6. Place the frame on the bottom side of the tabletop. Slide the mounting blocks into the frame and fix them with flat head screws.

