

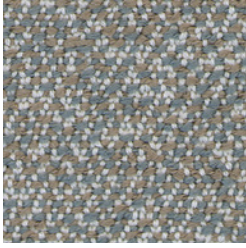


ROHI

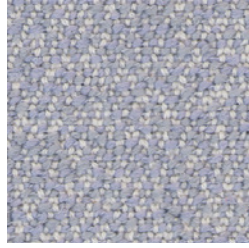
CENTO



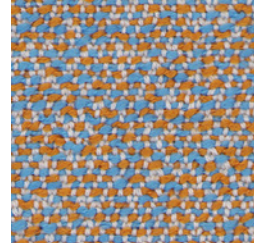
# CENTO



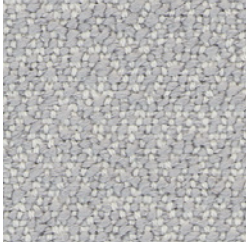
tapio



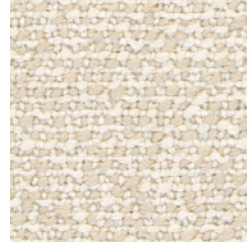
iris



bubble



frost



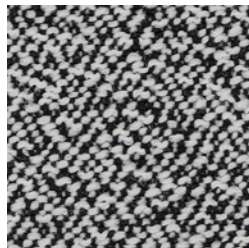
egret



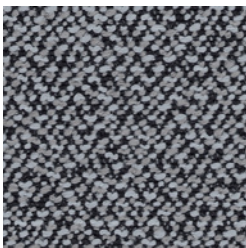
corn



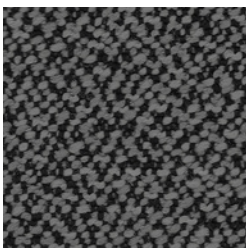
angora



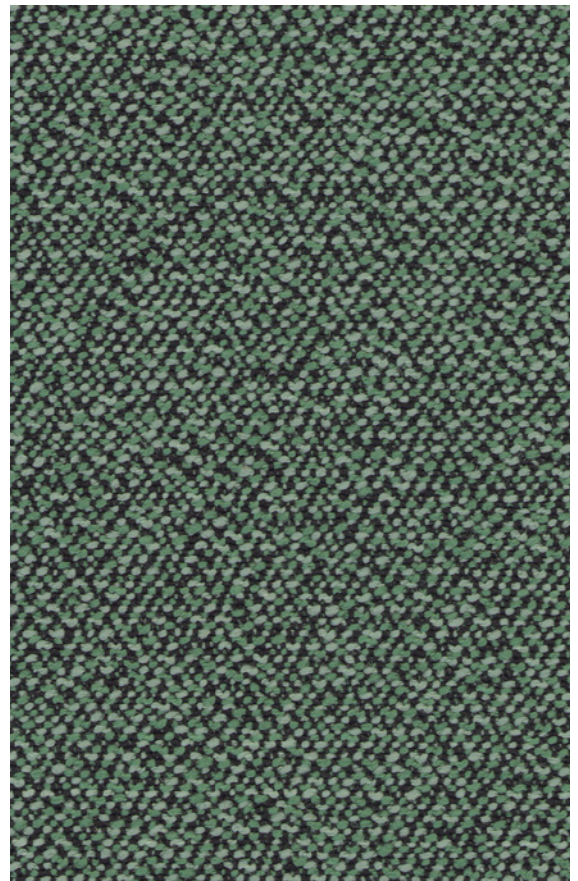
pepper



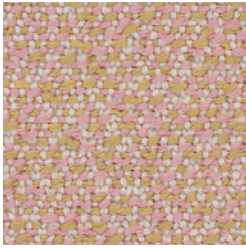
monument



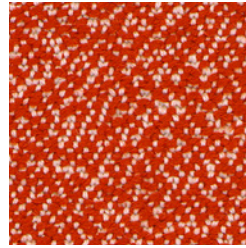
carbon



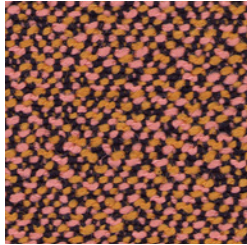
malachit



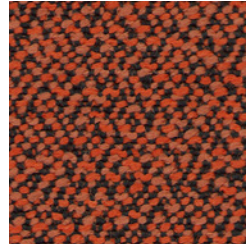
lotus



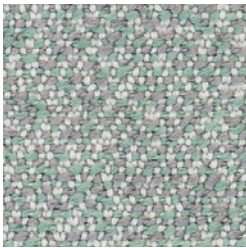
coral



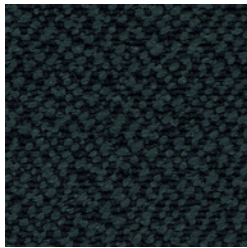
lobster



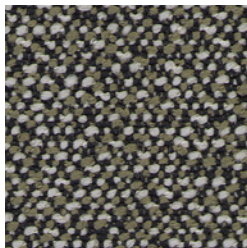
aurora



ray

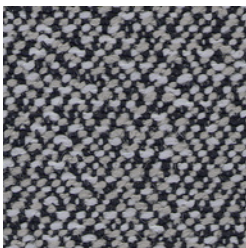


jaspis

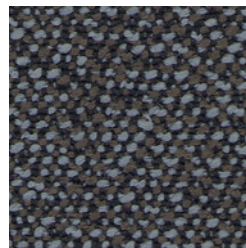


sepia

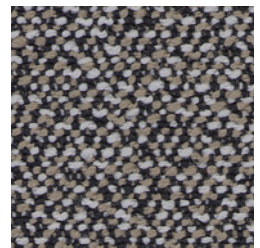
NATURAL MATERIAL  
SOFT TOUCH  
HIGH END QUALITY  
YARN DYED  
VIRGIN WOOL  
DESIGN  
MANUFACTURE  
EASY CARE  
LASTING VALUE



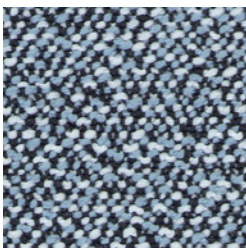
greige



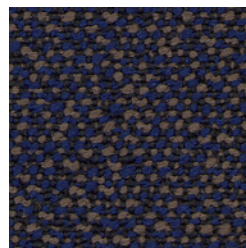
espresso



morel



stellar



deep

ROHI

#### GEWEBEBESCHREIBUNG

Dessin: CENTO  
Material: 100% Schurwolle  
Gewicht ca.: 620 g/m<sup>2</sup> - 870 g/lfm  
Breite ca.: 140 cm

#### QUALITÄTSBESCHREIBUNG

Scheuerfestigkeit: 30.000 Touren ISO 12947-2  
Lichtdurchlässigkeit: DIN EN 410  
Lichteinheit:  $\geq 5$  ISO 105-B02 (Garnfärbung)  
Pilling:  $\geq 4-5$  ISO 12945-2

reine Schurwolle – Kammgarnqualität  
pflegeleicht, atmungsaktiv und schmutzabweisend  
langlebig, hoch strapazierfähig  
Garnfärbung für bestmögliche Farbbrillanz  
und hohe Lichteinheit  
nicht direkter Sonneneinstrahlung aussetzen  
Produktion und Design in Deutschland seit 1933

#### FLAMMSCHUTZ

Wolle ist von Natur aus schwer entflammbar  
rohi Wollstoffe erfüllen folgende Normen  
ohne zusätzliche Flammenschutzrüstung:  
CAL TB 117 – 2013  
EN 1021-1/ -2  
BS 5852 Part 1: 1979  
UNI 9175 1IM  
ÖNORM B1/Q1  
IMO 2014/90/EU Schiffsausrüstungsrichtlinie

#### AKUSTIK

Strömungswiderstand:  $R_s = 514$  Pa s/m ISO 9053-1  
Schallabsorption gerafft:  $\alpha_w = 0,80/ B$  ISO 11654

#### ÖKOLOGIE

natürlich nachwachsender Rohstoff  
EU Ecolabel DE/016/038  
IWTO Guidelines for Wool Sheep Welfare  
RAL DE-UZ 117 Anl. 3b für „Blauer Engel“  
ohne Flammschutz  
AB 2998 (US Export Norm)  
REACH (EU Export Norm)

#### WEITERE MERKMALE

Spezialausrüstung gegen Schrumpfung und Pillingneigung  
Dimout Option auf Anfrage  
individuelle Stoffentwicklung  
für Architektur- und Designkonzepte  
Sonderfarben auf Anfrage

#### DESCRIPTION OF FABRICS

Design: CENTO  
Content: 100% virgin wool  
Weight approx.: 620 g/m<sup>2</sup> - 870 g/lm  
Width approx.: 140 cm

#### QUALITY DETAILS

Abrasion: 30.000 rubs ISO 12947-2  
Light transmission: DIN EN 410  
Lightfastness:  $\geq 5$  ISO 105-B02 (yarn dyed)  
Pilling:  $\geq 4-5$  ISO 12945-2

virgin wool – worsted yarn quality  
easy care, breathable and stain-resistant  
durable, hard-wearing  
yarn dyed for brilliant colours and  
good lightfastness  
don't expose to direct sunlight  
production and design 'Made in Germany' since 1933

#### FLAME RESISTANCE

wool is naturally flame retardant  
rohi wool fabrics satisfy the following fire norms  
with no additional flame retardant treatment:  
CAL TB 117 – 2013  
EN 1021-1/ -2  
BS 5852 part 1: 1979  
UNI 9175 1IM  
ÖNORM B1/Q1  
IMO 2014/90/EU Marine Equipment Directive (MED)

#### ACOUSTIC

Flow resistivity:  $R_s = 514$  Pa s/m ISO 9053-1  
Sound absorption folded:  $\alpha_w = 0.80/ B$  ISO 11654

#### ECOLOGY

natural, renewable raw material  
EU Ecolabel DE/016/038  
IWTO Guidelines for Wool Sheep Welfare  
RAL DE-UZ 117 Att. 3b for "Blue Angel"  
without flame retardant  
AB 2998 (US export standard)  
REACH (EU export standard)

#### MORE FEATURES

special finish: anti-shrink, anti-pilling  
dimout option on request  
development of individual fabrics for  
architects' and designers' concepts  
special colours on request



EU Ecolabel:  
DE/016/038



aktuellste Spezifikationen /  
latest specifications:  
[rohi.com/cento](http://rohi.com/cento)