

TURNTABLE (to d 140 cm)

ZEITRAUM

& TURNTABLE HIGH

assembly instruction 05/25

TOOLS REQUIRED:

socket wrench

1x screw nut (M10)



1x snap ring



1x flat washer



1x threaded rod (M10)



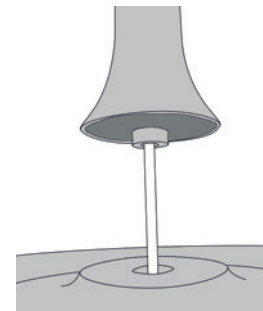
Please assemble the table **on a soft surface (e.g. a carpet or blanket)** to avoid damages.



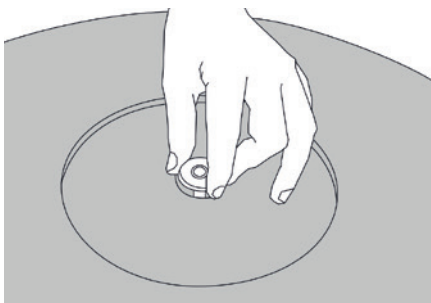
1. Place the tabletop upside down on a blanket and screw in the threaded rod.



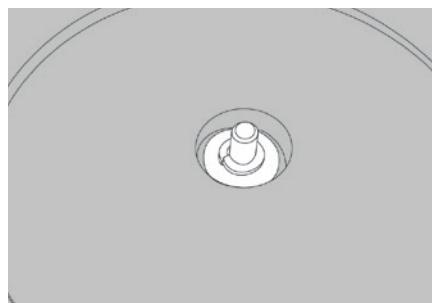
2. Place the tableleg on the threaded rod.



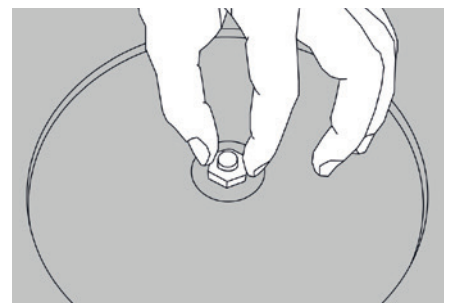
3. Insert the tenon into the drilling in the tabletop. Take care the adhesion disc lays flat.



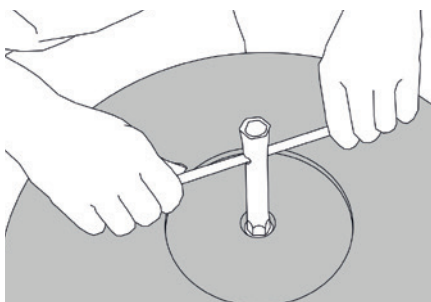
4. Place the flat washer...



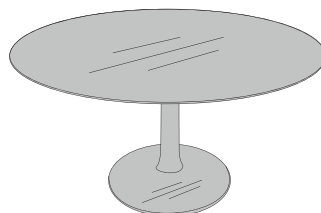
5. Then the snap ring...



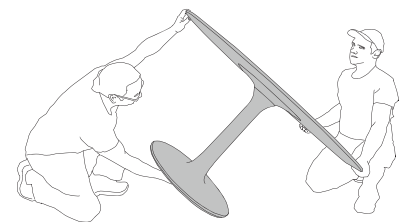
6. ... screw in the screwnut.



7. Tighten the screw nut with the socket wrench **just a little**.



8. Ensure that the wood grain of the table top matches the tablefoot.



9. Tighten the screw nut with the socket wrench properly.

Please note: In order to change the position of the table, do not rotate the tabletop. Please lift the table! Otherwise the tableleg may split.